



PALMAR  S  
OCEAN LIVING & GOLF

L19

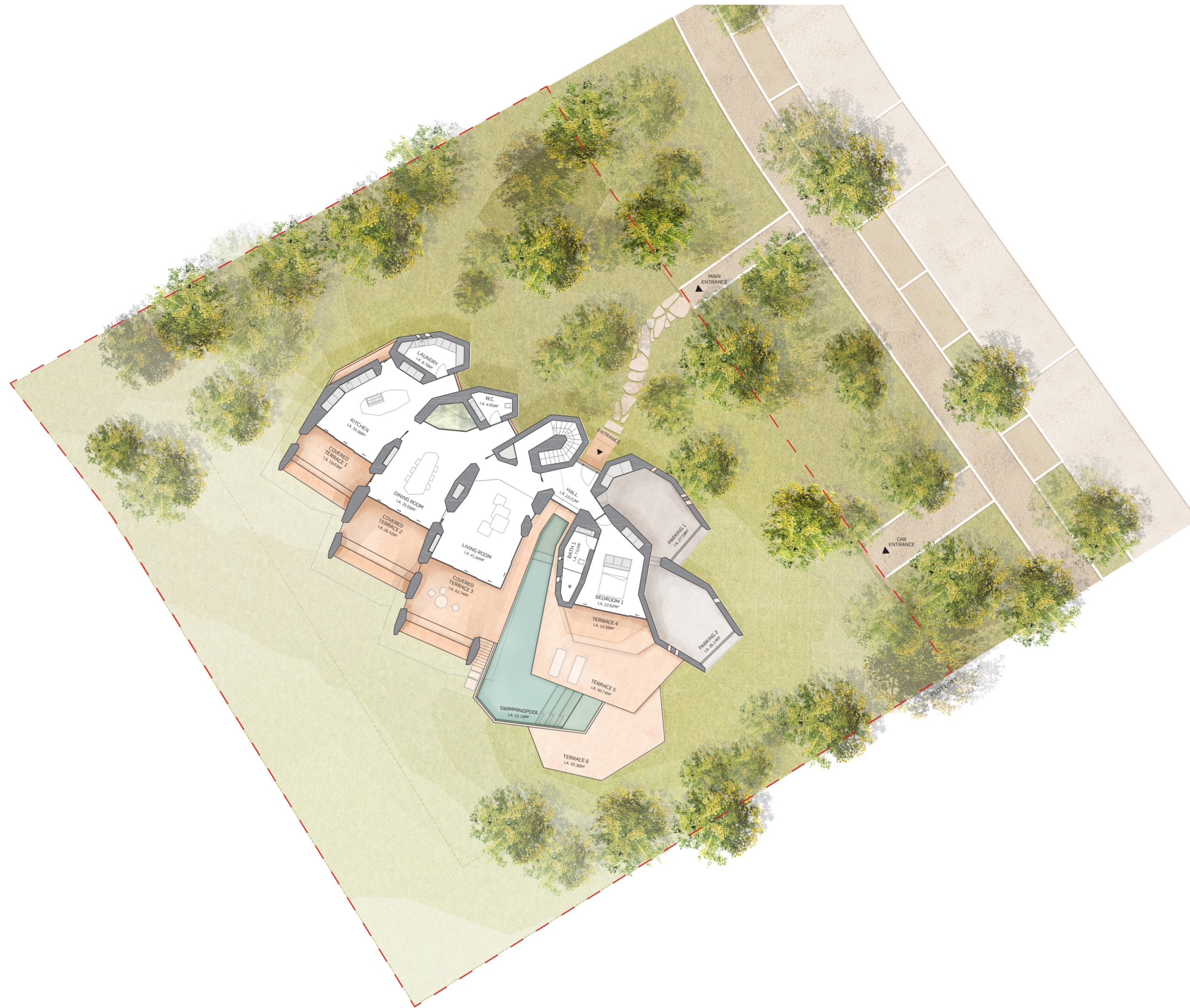




PALMAR  S  
OCEAN LIVING & GOLF

L19





**VILLA 19**  
Entrance Floor Plan



# PALMARES

OCEAN LIVING & GOLF

## L19

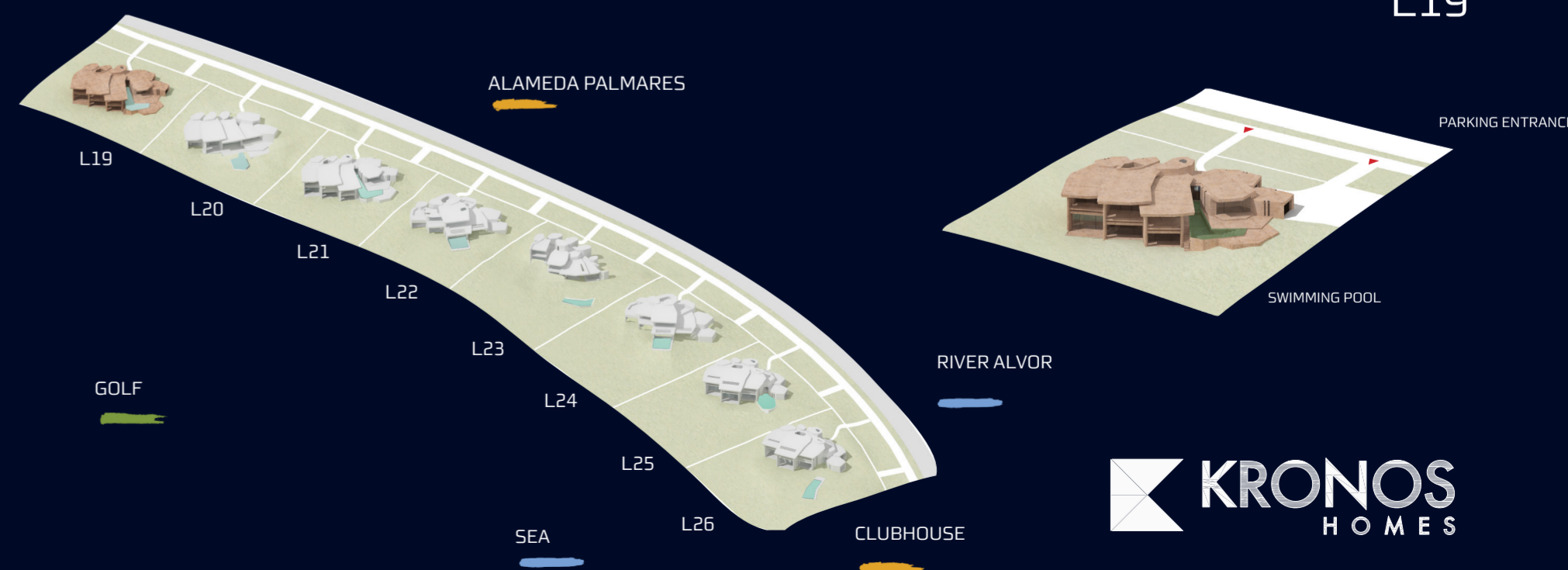
**VILLA 19**  
PLOT 19 - PRIVATE VILLAS

4 Bedrooms  
4 Bathrooms  
2 Parking Spaces



### APPROXIMATE AREAS

Internal Area	483.11 m <sup>2</sup>
Covered Terraces	154.33 m <sup>2</sup>
Terraces	82.56 m <sup>2</sup>
Total Private Area	720.00 m <sup>2</sup>
Swimming Pool	51.19 m <sup>2</sup>
Plot Area	2201.70 m <sup>2</sup>



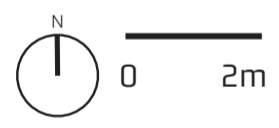
L19







**VILLA 19**  
Entrance Floor Plan



PALMARES  
OCEAN LIVING & GOLF

L19

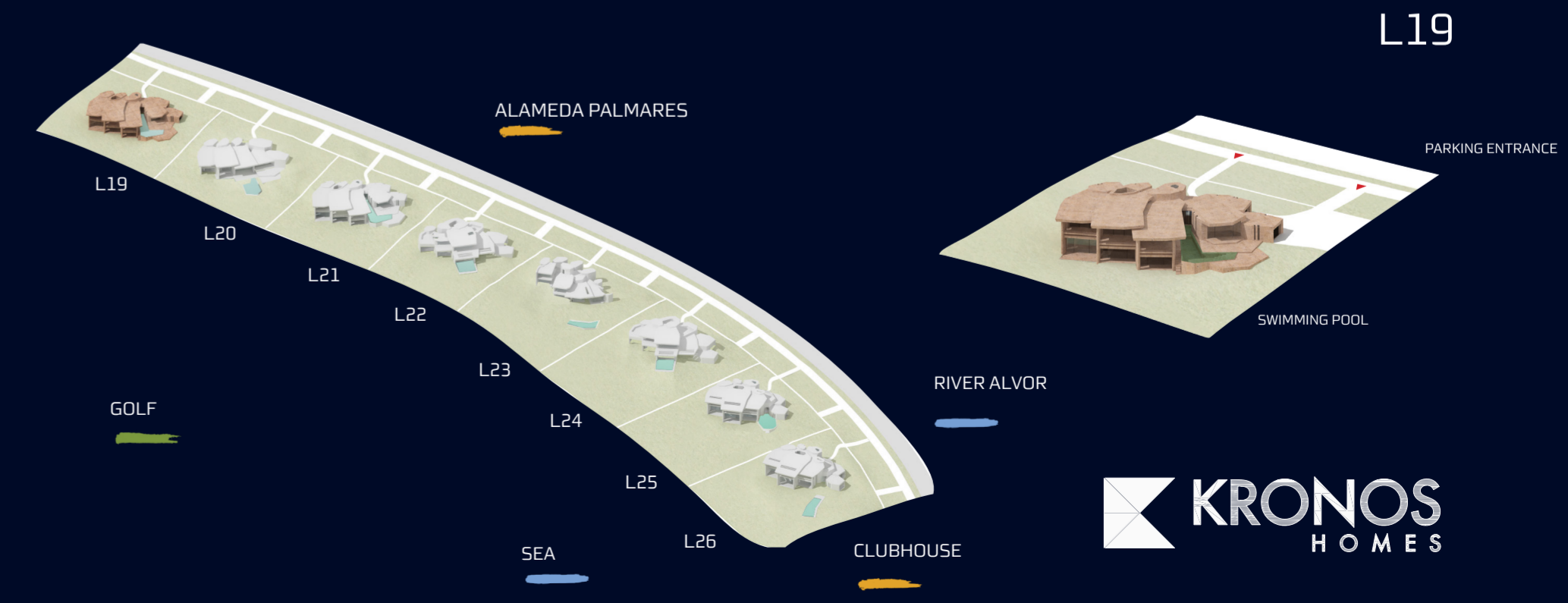
**VILLA 19**  
PLOT 19 - PRIVATE VILLAS

- 4 Bedrooms
- 4 Bathrooms
- 2 Parking Spaces



**APPROXIMATE AREAS**

Internal Area	483.11 m <sup>2</sup>
Covered Terraces	154.33 m <sup>2</sup>
Terraces	82.56 m <sup>2</sup>
Total Private Area	720.00 m <sup>2</sup>
Swimming Pool	51.19 m <sup>2</sup>
Plot Area	2201.70 m <sup>2</sup>



L19







**VILLA 19**  
Lower Floor Plan

PALMARES  
OCEAN LIVING & GOLF

L19

**VILLA 19**  
PLOT 19 - PRIVATE VILLAS

4 Bedrooms  
4 Bathrooms  
2 Parking Spaces



**APPROXIMATE AREAS**

Internal Area	483.11 m <sup>2</sup>
Covered Terraces	154.33 m <sup>2</sup>
Terraces	82.56 m <sup>2</sup>
Total Private Area	720.00 m <sup>2</sup>
Swimming Pool	51.19 m <sup>2</sup>
Plot Area	2201.70 m <sup>2</sup>

